

---

**THE BOSE®**

---

**ACOUSTIMASS® -5**

---

**SERIES II**

---

**DIRECT/REFLECTING®**

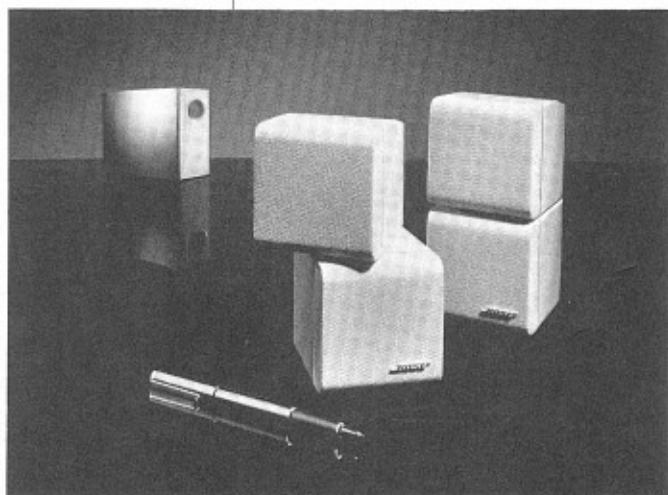
---

**SPEAKER**

---

**OWNER'S GUIDE**

---



---

**BEDIENUNGSANLEITUNG**

---

**NOTICE D'EMPLOI**

---

**GEBRUIKSAANWIJZING**

---

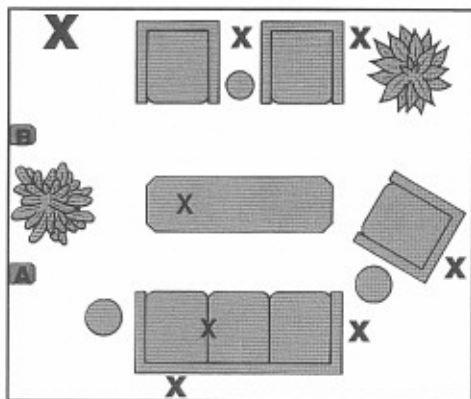
**MANUAL PARA USUARIOS**

---

**MANUALE DI ISTRUZIONI**

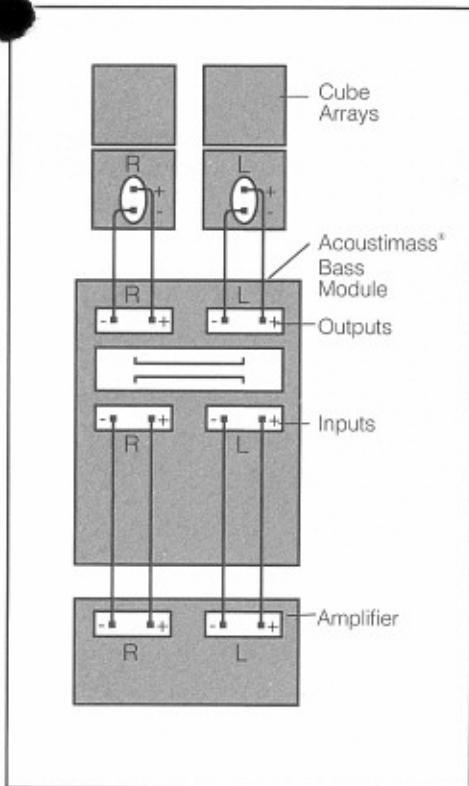
---

***BOSE***

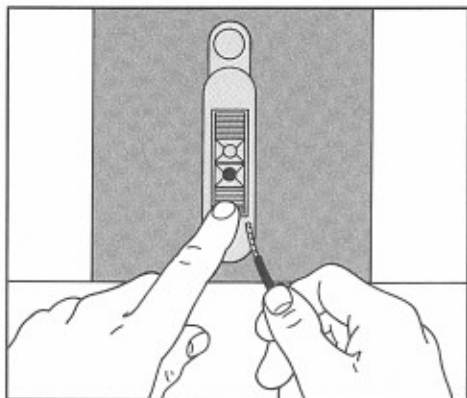


**Figure 1**

See page 2 for English explanation of diagrams.

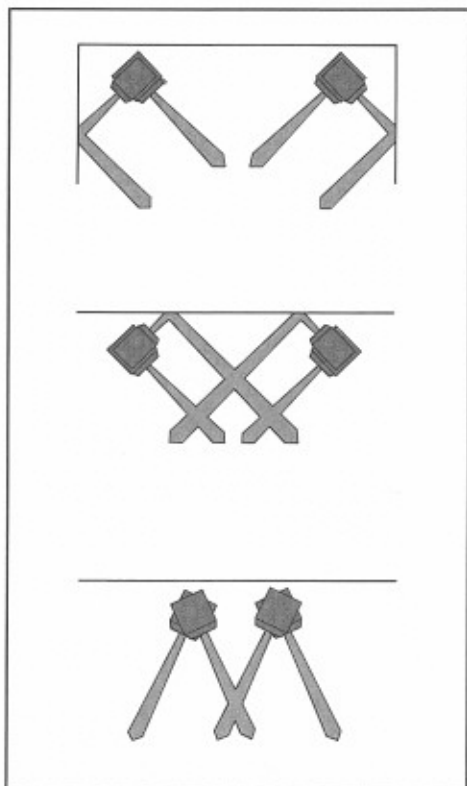


**Figure 3**



**Figure 2**

Per informazioni, vedere pagina 2.



**Figure 4**

## Diagrammi e illustrazioni per il sistema Acoustimass®-5

(fare riferimento al manuale inglese originale).

### Figura 1

Collocate il modulo Acoustimass (contrassegnato da X) ovunque nell'ambito del locale, dietro o sotto i mobili, o in un angolo (ove produce i bassi di maggior intensità). Collocate le torrette a cubi di sinistra (A) e di destra (B) sul lato sinistro e destro della stanza. Nella figura 1:

- A.** Diffusori a cubo del canale sinistro
- B.** Diffusori a cubo del canale destro
- X.** Possibili collocazioni del modulo bassi Acoustimass

### Figura 2

Premete la linguetta rossa ("+") sul retro della torretta di sinistra ed inserire l'estremità del conduttore contrassegnato o in rosso o con una costolatura esterna. Rilasciate la linguetta e controllate che il cavetto faccia una presa sicura. Inserite l'estremità dell'altro conduttore nel terminale marcato ("—"). Ripetete la procedura con la torretta di destra.

### Figura 3

Individuate i terminali sul retro del modulo Acoustimass marcati "OUTPUT TO CUBE SPEAKERS".

Collegate i cavi provenienti dalle due torrette di cubi ai rispettivi terminali "R" (destra) e "L" (sinistra). Accertatevi che i conduttori contrassegnati (in rosso o con costolatura) siano sempre collegati ai terminali "+".

Individuate poi i terminali marcati "INPUTS FROM AMP OR RECEIVER" sul retro del modulo Acoustimass. Utilizzate i cavi rimanenti per collegare il modulo al vostro amplificatore o ricevitore, sempre rispettando contrassegni e canali.

### Figura 4

Ponete in posizione ciascuna torretta di diffusori a cubo e ruotate il cubo superiore di ognuna in modo da ottenere il bilanciamento spaziale più adatto alla geometria dell'ambiente o al vostro gusto musicale.

## Diagrams and illustrations for the Acoustimass®-5 system

### Figure 1

Place the Acoustimass module (X) anywhere within your room, behind or beneath furniture, or in a corner (where it will provide the greatest bass output). Position the Left (A) and Right (B) cube arrays on the left and right sides of the room. In Figure 1:

- A.** Left cube array
- B.** Right cube array
- X.** Acoustimass bass module possibilities.

### Figure 2

Depress the red ("+") tab on the rear of the left cube array and insert one end of the wire with a red or striped marker. Release the tab, checking to make sure the lead is firmly attached. Insert one end of the other wire into the terminal marked "—" Repeat the procedure for the right cube array.

### Figure 3

Locate the terminals marked "OUTPUTS TO CUBE SPEAKERS" on the rear of the Acoustimass module.

Connect the wires from the cube arrays to the respective "R" (right) and "L" (left) sets of terminals. Make sure that wires with a red or striped marker are always connected to a "+." Next locate the terminals marked "INPUTS FROM AMP OR RECEIVER" on the rear of the Acoustimass module. Use the remaining wires to connect the module to your amplifier or receiver.

### Figure 4

Position each cube array and then rotate the top cube to adjust the spatial balance of your system to suit your room layout or musical taste.

# The Bose® Acoustimass®-5 Series II speaker system owner's guide

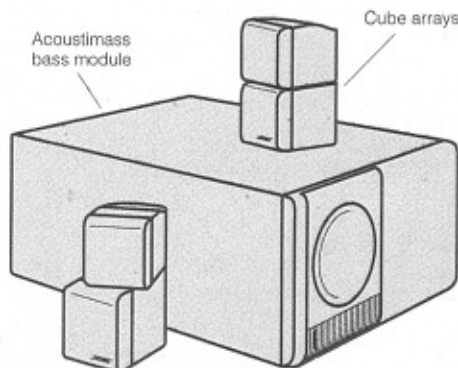
We would like to thank you for purchasing the Bose Acoustimass-5 Series II speaker system. The advanced technology and quality construction of the Acoustimass system is designed to provide you with a lifetime of musical listening pleasure.

The Acoustimass-5 system offers many advantages not available from a conventional speaker system. For one, the system adjusts to deliver the combination of reflected and direct sound optimal for your listening environment or your musical taste. For another, this Virtually Invisible® speaker system delivers a lifelike musical performance formerly associated with room-dominating loudspeakers, yet it requires very little space.

It is our intention for you to gain the greatest enjoyment of the system and its unique benefits. Therefore, to ensure easy installation and the best results from your new speakers, please take the time to read this owner's guide.

The first section gives you step-by-step instructions on how to set up and connect the system to your stereo, to begin enjoying it as soon as possible. In later sections, we've included more detailed information and suggestions on arranging your system's components and on using your system to get the best quality performance possible.

Because the Acoustimass system's operating principles and wiring configuration are significantly different from those of conventional speakers, it provides not only outstanding sound, but great placement flexibility, so you can enjoy your living space while you enjoy your music.



Everything you need to hook up your Acoustimass-5 system is contained in the shipping cartons. Before you begin to install the system, take a minute to familiarize yourself with all of its parts, which include:

- 2 Cube arrays
- 1 Acoustimass bass module
- 4 Wires
- 4 Adhesive-backed rubber feet

To remove the system from the carton, first remove all packing materials and carefully lift each component out. Be sure to save all cartons and packing materials in case you need to transport your system again. If any components appear damaged upon removal, do not attempt to use the system. Instead, repack the system in its original carton and notify your authorized Bose dealer immediately.

## Five easy steps to superb sound

**Caution:** Be sure to unplug your receiver or amplifier from the wall outlet before attempting to connect the Acoustimass®-5 system to it.

### 1

#### Set up the system components.

(Figure 1)

Select the location for each of your Acoustimass system components. Place the Acoustimass module virtually anywhere in your listening room, in either a vertical or horizontal position (once this is determined, the protective rubber feet may be applied to the "bottom" of the module). It can be hidden under a bed or table or even behind a sofa, as long as you remember not to block the round opening in the end of the unit (allow at least 2 in. or 5 cm of space between that end and any surface.) Next, select the positions for the left and right cube arrays. Remember that wires from the arrays connect to the Acoustimass module, so you should locate the cube arrays close enough to the module to enable the wires to reach it.

**Note:** While the wires provided are adequate for most installations, you may increase the distance between the cube arrays and the Acoustimass module by splicing in additional wire. If you do so, use similar gauge or thicker wire, and make sure you maintain the correct phase ("+" to "+" and "-" to "-"), and properly connect the wires.

### 2

#### Examine the cables and connections.

Locate the four identical sets of wires packed with the system. Two sets will connect your cube arrays to the Acoustimass module, while the other two sets will connect the Acoustimass module to your receiver or amplifier. Examine the ends of the wires for each set, and make sure that you connect the wire with a red or striped marker to the "+" terminal for each connection.

### 3

#### Connect the cube arrays to the Acoustimass module.

Select one pair of connector wires, and locate the terminals on the rear of the left cube array. Depress the red ("+" ) tab, insert the lead with the red or striped marker (Figure 2) and release the tab. The lead should be held snugly in place by the terminal. Repeat the process for the black terminal and the other lead. Follow the same procedure for the right cube array, using a second pair of wires.

**Caution: Do not connect your amplifier or receiver directly to the cube array terminals. Cube arrays must be connected directly to the Acoustimass® module or damage will result.**

Next, locate the terminals marked "OUTPUTS TO CUBE SPEAKERS" on the rear of the Acoustimass module (Figure 3). Connect the loose ends of the wires from the left cube array to the pair of terminals marked "L." Make sure that the lead with the red or striped marker is connected to the "+," and the other lead to the "-" terminal.

Now, repeat the last two steps for the right cube array, connecting its wires to the terminals marked "R" (Figure 3).

#### 4

### **Connecting the Acoustimass-5 Series II system to your stereo.**

Select one of the remaining two pairs of wires, and locate the left channel terminals on the Acoustimass module marked "INPUTS FROM AMP OR RECEIVER". Depress the red ("+") tab, insert the lead with the red or striped marker, and release the tab. Repeat the process for the black terminal and the other lead. Then follow the same procedure for the right channel, using the last pair of wires.

Now, locate the speaker outputs on your amplifier or receiver. Connect the other ends of the wire from the left channel of the Acoustimass module to the terminals marked "L" or "LEFT." Make sure that the lead with the red or striped marker is connected to the "+" and the other lead is connected to the "-" terminal. Repeat these last two steps for the right channel.

*Before you plug in your receiver or amplifier, make sure that no strands of wire from any terminal are brushing against any other terminal. Such "bridged" wires create short circuits which can damage your receiver or amplifier.*

#### 5

### **Enjoy your new system!**

Now, plug in your receiver, turn on your system, and enjoy your music!

## Ideally positioning your Acoustimass®-5 Series II system to get the best sound

One of the real benefits of your Acoustimass-5 system is its flexibility. For instance, the cube arrays of your Acoustimass-5 system are magnetically shielded for use with video systems. This allows you to position the cube arrays close to your TV or monitor without adversely affecting the picture quality (as happens with conventional, unshielded speakers).

### **Cube considerations**

**A.** In average-sized listening rooms, the best stereo effects result when the left and right cube arrays are spaced 6 to 12 feet apart (approximately 1.8-3.6 m). However, you can still achieve excellent results with separation as little as 3 feet (approximately 1 m) or as great as 15 feet (approximately 4.5 m).

**Note:** For video applications, separation can be less than 3 feet. While this may slightly reduce performance, it will allow the cube arrays to be located on each side of a TV or monitor.

**B.** Though there is no "correct" position for the cube arrays or the angle between them, the most lifelike sound will be achieved by providing a balance of direct and reflected sound. Experiment with the positions of the cubes for the results you prefer. Figure 4 shows some typical cube arrangements.

You may choose to use the cube arrays with both cubes facing forward. This eliminates the benefits of combining direct and reflected sound, but may be appropriate for very small listening areas.

### **Acoustimass module considerations**

Unlike conventional floor standing or bookshelf speakers, you can also fine-tune the bass response of your Acoustimass-5 system without compromising accurate stereo imaging. Just change the location of the Acoustimass module within your listening room. For typical listening environments, positioning the module along a wall 3 to 5 feet (approximately 1 to 1.5 meters) from a corner provides a normal balance of frequencies from your Acoustimass-5 system. Moving the module close to the walls and/or corners of your room will increase bass response, while moving it toward the center of your room will decrease it. In most rooms, it should be reasonably easy to choose a location that is convenient, yet provides pleasing bass response.

**Note:** While the cube arrays are shielded, the Acoustimass module is not shielded and should always be placed at least 2 feet from any monitor or television.

## Using your Acoustimass®-5 Series II system to its best advantage

Once your Acoustimass-5 system is set up and connected properly, it will require very little attention. However, observing the following guidelines will help you get the most from your investment.

### **Room Acoustics**

The acoustics (sound properties) of your listening room can affect the overall sound quality of any speaker system, including your Acoustimass-5 system. The following tips will give you some control over the system's sound:

1. Rooms with a lot of sound-absorbing furnishings such as stuffed furniture, wall-to-wall carpet, or heavy drapes may reduce the treble sound (high frequencies) of your Acoustimass-5 system. The missing treble sound can be restored by slightly turning up the treble control on your amplifier or receiver. If convenient, you may instead remove some of the sound-absorbing furnishings.
2. Rooms with too few sound absorbing furnishings, especially those with bare floors and walls, may sound overly shrill or "bright" because of too much treble. Turning down the treble control or adding sound absorbers such as throw carpets or drapes will usually improve the sound.

3. If your system seems to have too much or too little bass (low frequencies), you can adjust it using the bass control on your amplifier or receiver. As described previously, you may also move the Acoustimass module closer to a wall and/or corner to increase bass, or closer to the center of the room to decrease it.
4. In general, many problems with acoustics can be solved by the judicious use of your tone controls. Remember, though, that the use of these controls (especially when turned all the way up) may put greater power demands on your receiver or amplifier. Excessive tone control can cause an amplifier or receiver to run out of power and distort, potentially damaging your system.
5. External signal processors (such as graphic and parametric equalizers), while not recommended, can be used with your Acoustimass-5 system if a greater degree of acoustic control is desired. Consult your Bose® dealer for advice.

### **Automatic System Protection**

The Acoustimass-5 speaker system incorporates an automatic protection circuit, which guards the system against most kinds of potential damage due to electrical stress or overload. This circuit activates at high volume levels to reduce the system output, causing a slight decrease in volume. This is normal operation and indicates that power input may be exceeding safe levels. Sustained listening at these levels is not recommended.



**Amplifier/receiver considerations**

Your Acoustimass® speakers incorporate heavy-duty driver elements designed to resist many types of electrical stress. However, any speaker can be damaged if the amplifier driving it should fail. Speaker damage may also occur by playing the music so loudly that it sounds distorted. *This can happen even with a low-powered amplifier or receiver.*

Your Acoustimass speaker system, is designed for use with amplifiers or receivers rated from 10 to 200 watts per channel. For further information, refer to your amplifier or receiver owner's guide.

## Checking your system

Once you have begun listening to your Acoustimass-5 system, the following test will help you make sure that the system is working properly:

- A.** Turn the balance control on your receiver or amplifier completely to the left. If you have connected the cube arrays properly, you will hear the music from the left cube array, but not the right one. You may notice a very faint sound issuing from the right cube array, which is normal.
- B.** Now, turn the balance control completely to the right. If your cube arrays are connected properly, this time you will hear music only from the right one. You may also detect a very faint sound from the other cube array.
- C.** Return the balance control to the center position. Play a selection with good, deep bass, and listen to the music. Now turn the balance control all the way to the left and listen, and then turn the balance all the way to the right and listen. If the system is connected properly, the center position should exhibit the same or greater bass response than either the left-only or right-only position. If it exhibits less, then your speakers are wired out of phase. Check to make sure that your receiver or amp is properly connected to the module.
- D.** Return the balance control to the center position.

If your system does not appear to be working properly, refer to the section entitled "In Case You Have a Problem."

## Maintaining your new system

The cabinets of your Acoustimass®-5 system may be easily cleaned with a damp cloth and, if necessary, a mild detergent such as dish soap. Do not allow liquids to spill through the grille assemblies of the cube arrays, or in any way to enter the Acoustimass module.

The grille assemblies on the cube arrays may be carefully vacuumed if necessary. Please note that the drivers are located directly behind the grill cloth, and are easily damaged if reasonable care is not taken. Avoid applying any pressure with the vacuum nozzle.

## In case you have a problem

If you have a problem connecting and using your Acoustimass-5 system, try the procedures listed below. The majority of problems usually occur in components other than the speakers.

### Problem:

The left cube array doesn't play or sounds distorted.

### Solution:

Turn off the amplifier or receiver. Check the wiring that connects the cube array to the Acoustimass module, and the wiring that connects the module to the amplifier or receiver. If no visible problem is found, disconnect the wires at the back of the amplifier or receiver. Now connect the left wires to the right amplifier terminals. Turn the balance control on the receiver or amplifier completely to the right, and turn the power

on. If the left cube array now works properly, the left channel of your amplifier or receiver is probably defective.

**Caution: Do not connect the other cube speaker array to the channel in question. If the amplifier or receiver channel is defective, damage to your Acoustimass-5 system might occur.**

### Problem:

The right cube array doesn't play or sounds distorted.

### Solution:

Use the same procedure as given for the left cube array, but substitute the words "left" for "right" and "right" for "left."

### Problem:

The whole Acoustimass-5 system does not play or sounds distorted.

### Solution:

Turn off the receiver or amplifier and disconnect the Acoustimass-5 system. Reconnect the Acoustimass system to another receiver or amplifier known to be working properly. If the Acoustimass-5 system now works properly, the problem is not in the Acoustimass-5 system.

**Note:** If this is the case, you should check all user accessible fuses on your receiver or amplifier (see the appropriate owner's guide for help). If the fuses blow again, have the amplifier or receiver checked by qualified personnel.

If trouble persists in your Acoustimass-5 system, contact your authorized Bose® dealer. He will verify any defects and arrange for service by an authorized service agency or by the Bose factory. Bose Corporation will make every effort to remedy any problem within the terms of the warranty at minimum inconvenience to you.

## Accessories

Bose® offers a variety of mounting accessories to enhance the flexibility of your Acoustimass®-5 system. For information and ordering instructions, contact your local Bose dealer, or call Bose, toll free, at 1-800-444-BOSE in the USA; or 1-800-465-BOSE in Canada.

## Technical information

### Features

Direct/Reflecting® speaker design  
Acoustimass® speaker system  
Syncom®II computerized quality control  
Automatic system protection circuitry

### Driver Complement

Two 5 1/4" (13.3 cm) low-frequency drivers  
Four 2.5" (6.4 cm) magnetically shielded, wide-range drivers in cube arrays

### Compatibility

Compatible with receivers or amplifiers rated from 4 to 8 ohms  
Compatible with receivers or amplifiers rated from 10 to 200 watts per channel

### Finish

Acoustimass module: Scratch-resistant black or white satin finish  
Cube arrays: Black or white polymer finish

### Dimensions

Acoustimass module: 14"H x 19"W x 7 1/2"D  
(35.5 x 48 x 19.1 cm)

Cube array: 6 3/8"H x 3 1/8"W x 4 3/4"D  
(16.2 x 7.9 x 12.1 cm)

### Weight

30 lb (13.6 kg), in shipping carton

## Limited warranty Bose product

**What is covered:** All parts defective in material or workmanship.

**For how long:** 5 years from the Acoustimass-5 system purchase date.

**What we will do:** We will repair or replace, at our sole option, free of charge, any defective parts.

**What we will not do:** Pay shipping or transportation charges from you to us.

### What you must do:

1. Return product personally with original proof of purchase from an authorized Bose dealer to your authorized Bose dealer, or
2. Return product personally with original proof of purchase from an authorized Bose dealer to the nearest authorized Bose Service Agency, or
3. Return product with original proof of purchase from an authorized Bose dealer directly to the Bose factory. If you elect to return the product directly to the Bose factory,
  - a. Call the Bose Service Department at **(508) 366-9896**, and ask to be assigned a return authorization number and shipping instructions;
  - b. Properly pack the product in the original carton for shipping. If you need a new carton, contact Bose Corporation for a new carton available at nominal charge;

- c. Label and ship, freight prepaid, to the address provided by the Bose® Service Department, and
- d. Place your return authorization number prominently on the outside of the carton. (Cartons not bearing a return authorization number will be refused.)

**Other conditions:** This warranty is fully transferable provided the current owner furnishes the original proof of purchase from an authorized Bose dealer. ANY IMPLIED WARRANTIES EXPIRE AT THE EXPIRATION DATE OF THIS WARRANTY. WE SHALL NOT BE LIABLE FOR INCIDENTAL OR CONSEQUENTIAL DAMAGES. This warranty does not cover a defect that has resulted from improper or unreasonable use or maintenance, accident, improper packing, or unauthorized tampering, alteration or modification as determined solely by us. This warranty is void if the label bearing the serial number has been removed or defaced.

**Other Law Rights:** This warranty gives you specific legal rights, and you may also have other rights which vary from state to state or country to country. Some places do not allow the exclusion or limitation of incidental or consequential damages, so the above limitation or exclusion may not apply to you. Contact your local authorized Bose dealer or distributor for warranty information if you purchased product outside the United States.

# To contact Bose® Corporation

---

## **U.S.A.**

Bose Corporation, The Mountain  
Framingham, MA 01701-9168  
1-800-367-4008  
Weekdays 9 a.m. to 8 p.m.  
Saturdays 9 a.m. to 3 p.m. ET (eastern time)

## **Canada**

Bose Ltd., 8-35 East Beaver Creek Road  
Richmond Hill, Ontario L4B 1B3  
1-800-444-BOSE (1-800-444-2673)  
Weekdays 9 a.m. to 5 p.m. ET (eastern time)

## **European Headquarters**

Bose BV, Nijverheidstraat 8  
1135 GE Edam, Nederland  
TEL 0299-390190 FAX 0299-39010

## **Australia**

Bose Australia, Inc., 1 Sorrell Street  
Parramatta, N.S.W. 2150  
TEL 02 204-6111 FAX 02 204-6122

## **Belgique/België**

Bose N.V., Limesweg 2, B-3700  
Tongeren  
TEL 012-390800 FAX 012-390840

## **Danmark**

Bose A/S, Industrivej 7, 2605 Brøndby  
TEL 4343-7777 FAX 4343-7818

## **Deutschland**

Bose GmbH, Max-Planck-Straße 36d  
D-61381 Friedrichsdorf  
TEL 06172-71040 FAX 06172-710419

## **France**

Bose, 6, rue Saint Vincent  
78100 Saint Germain en Laye  
TEL 01-30616363 FAX 01-30614105

## **India**

Bose Corporation India Private Limited  
W-16, Greater Kailash-II  
New Delhi 110 048  
TEL (011) 648 4462 FAX (011) 648 4463

## **Ireland**

Bose Corporation  
Carrickmacross, Co Monaghan  
TEL 042-61988 FAX 042-61998

## **Italia**

Bose S.p.A., Via Luigi Capucci 12  
00147 Rome  
TEL 06-5127641 FAX 06-5115438

## **Japan**

Bose K.K., Shibuya YT Building, 28-3  
Maruyama-cho, Shibuya-ku, Tokyo 150  
TEL 3-5489-1054 FAX 3-5489-0591

## **Nederland**

Bose B.V., Nijverheidstraat 8  
1135 GE Edam  
TEL 0299-390190 FAX 0299-390109

## **Norge**

Bose Norge, Solheimsgate 11  
N-2001, Lillestrøm  
TEL 63-817380 FAX 63-810819

## **Österreich**

Bose Ges.m.b.H., Vienna Business Park  
Wienerbergstrasse 7 (10.OG)  
A-1100 Vienna  
TEL 01-60404340 FAX 01-604043423

## **Schweiz**

Bose A.G., Rünenbergerstrasse 13  
4460 Gelterkinden  
TEL 061-9815544 FAX 061-9815502

## **Sverige**

Bose A/S, Blandsädsgratan 2D  
S-43146 Mölndal  
TEL 31-878850 FAX 31-274891

## **United Kingdom**

Bose UK Ltd, Trinity Trading Estate  
Sittingbourne, Kent ME10 2PD  
TEL 01795-475341 FAX 01795-427227

## **From other locations**

Bose Customer Service, 1 New York Ave.  
Framingham, MA 01701-9168 USA  
TEL (508) 766-1900 FAX (508) 766-1919

## **World Wide Web**

[www.bose.com](http://www.bose.com)

***BOSE***<sup>®</sup>  
*Better sound through research.*

©1997 Bose Corporation  
The Mountain, Framingham, MA 01701-9168  
JN98822 PN142218 Rev.08 AM142218 Rev.08